

sew

Issue 112 July 2018

ISABELLA TUNIC PATTERN

Use these guides to get started today

PRINT
OUT
& KEEP

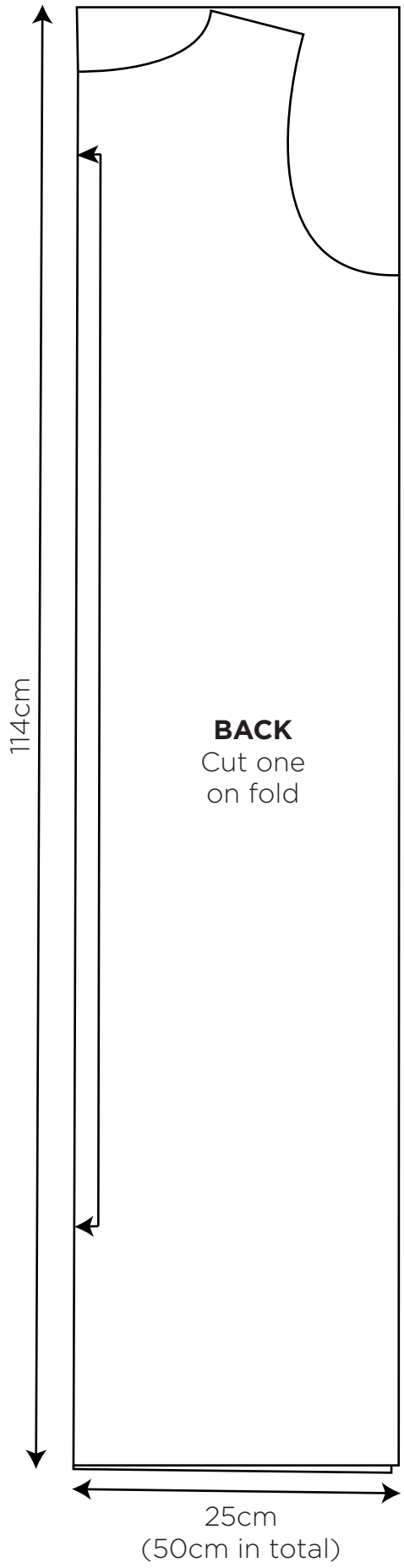
IN YOUR PRINT MENU, UNDER SIZE OPTIONS, BE SURE TO
SELECT TO PRINT 'ACTUAL SIZE', INSTEAD OF 'FIT TO PAGE'

Title: Isabella tunic
Designer: Amanda Walker
Magazine page: 22

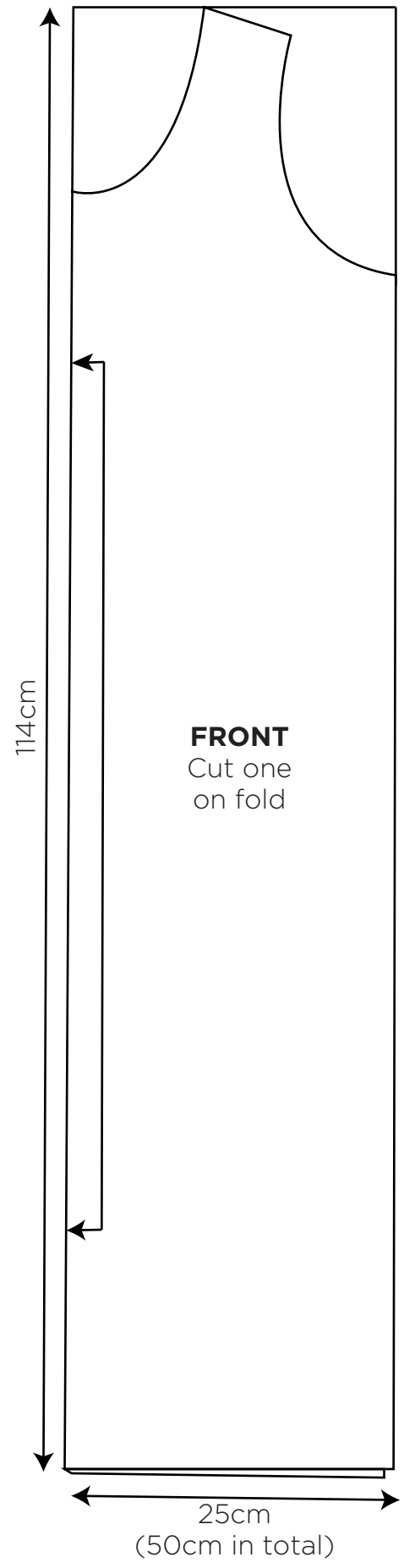


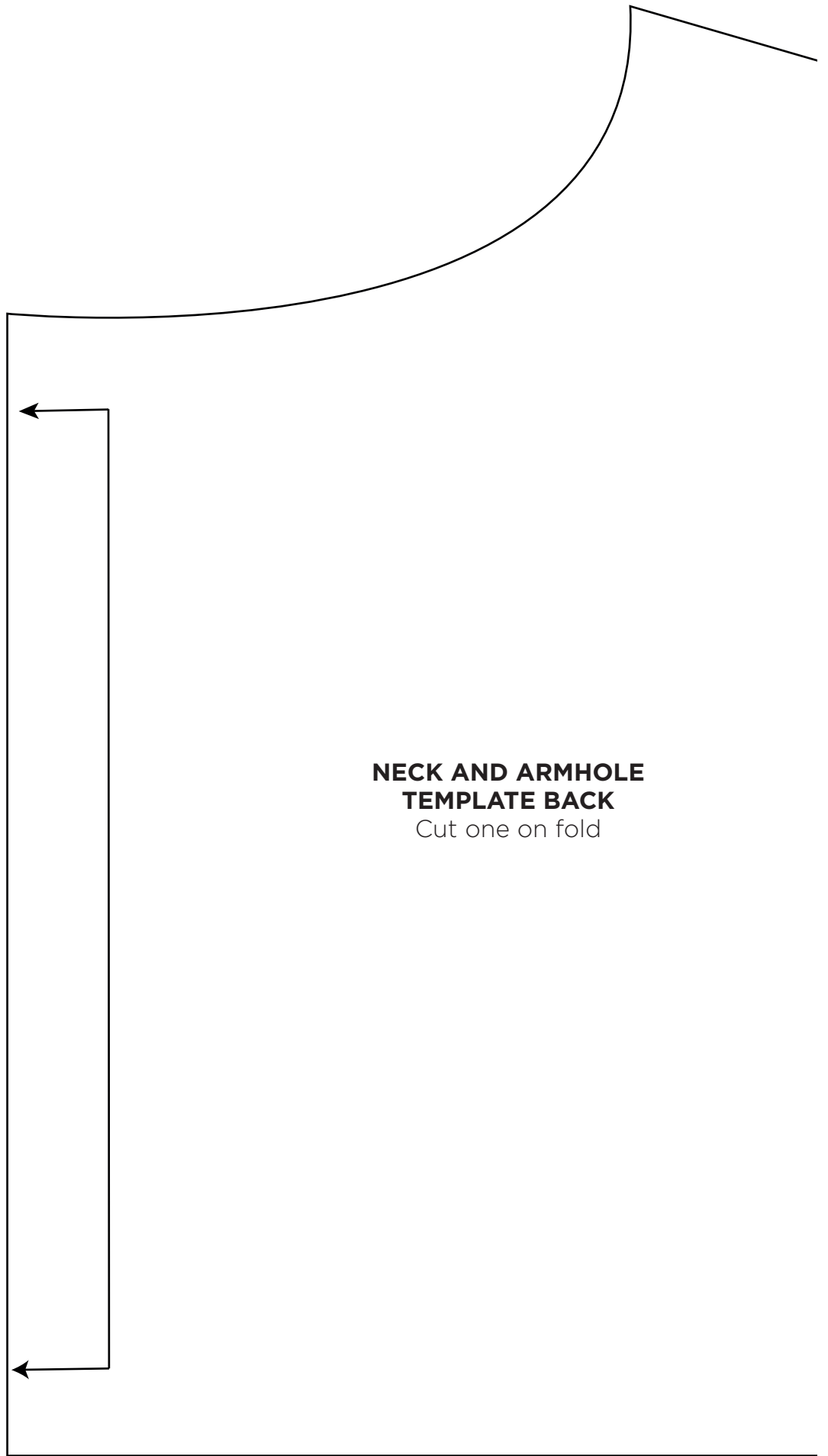
© ACEVILLE PUBLICATIONS LTD | SEWMAG.CO.UK

All projects, templates and patterns are for personal home use only and cannot be sold or used for commercial purposes.

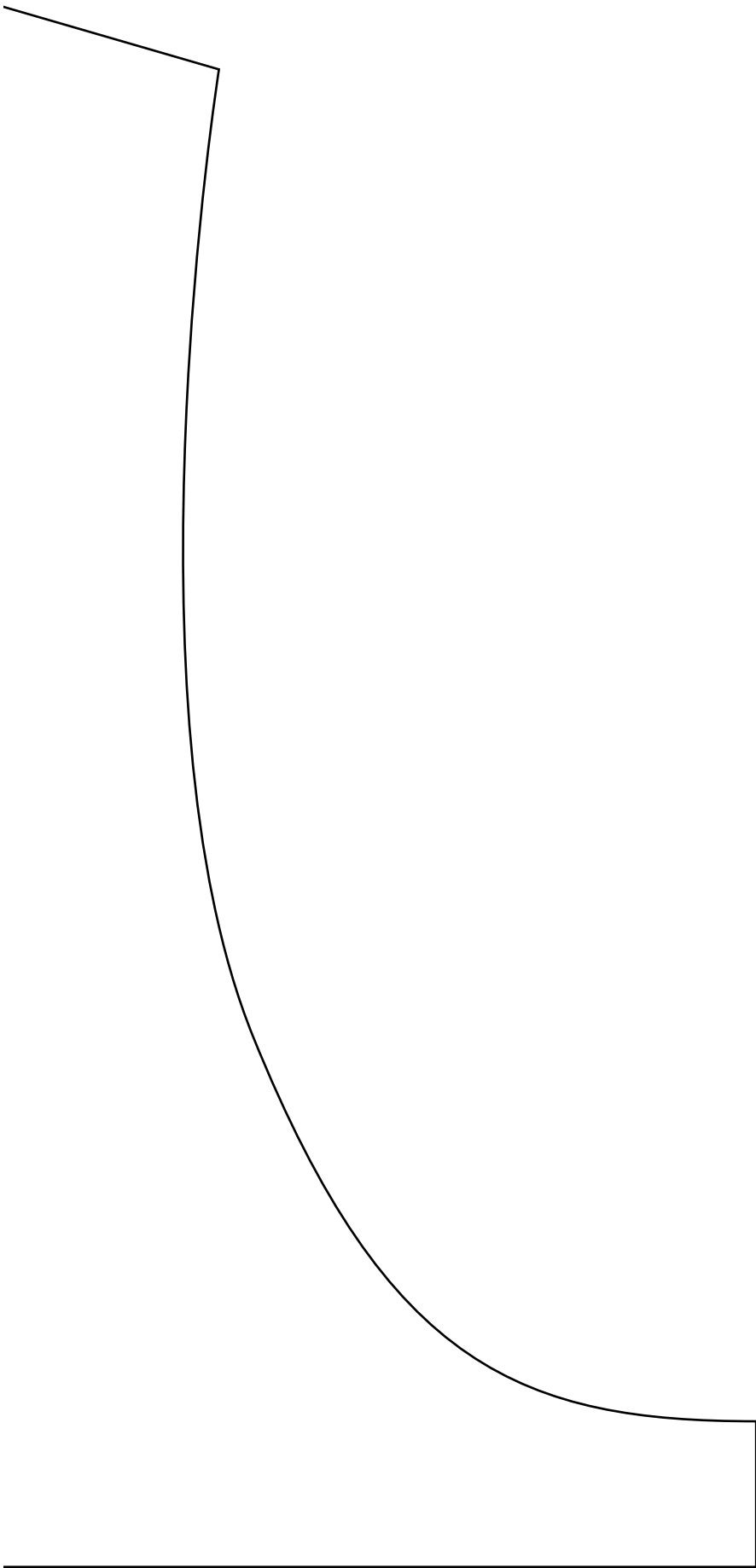


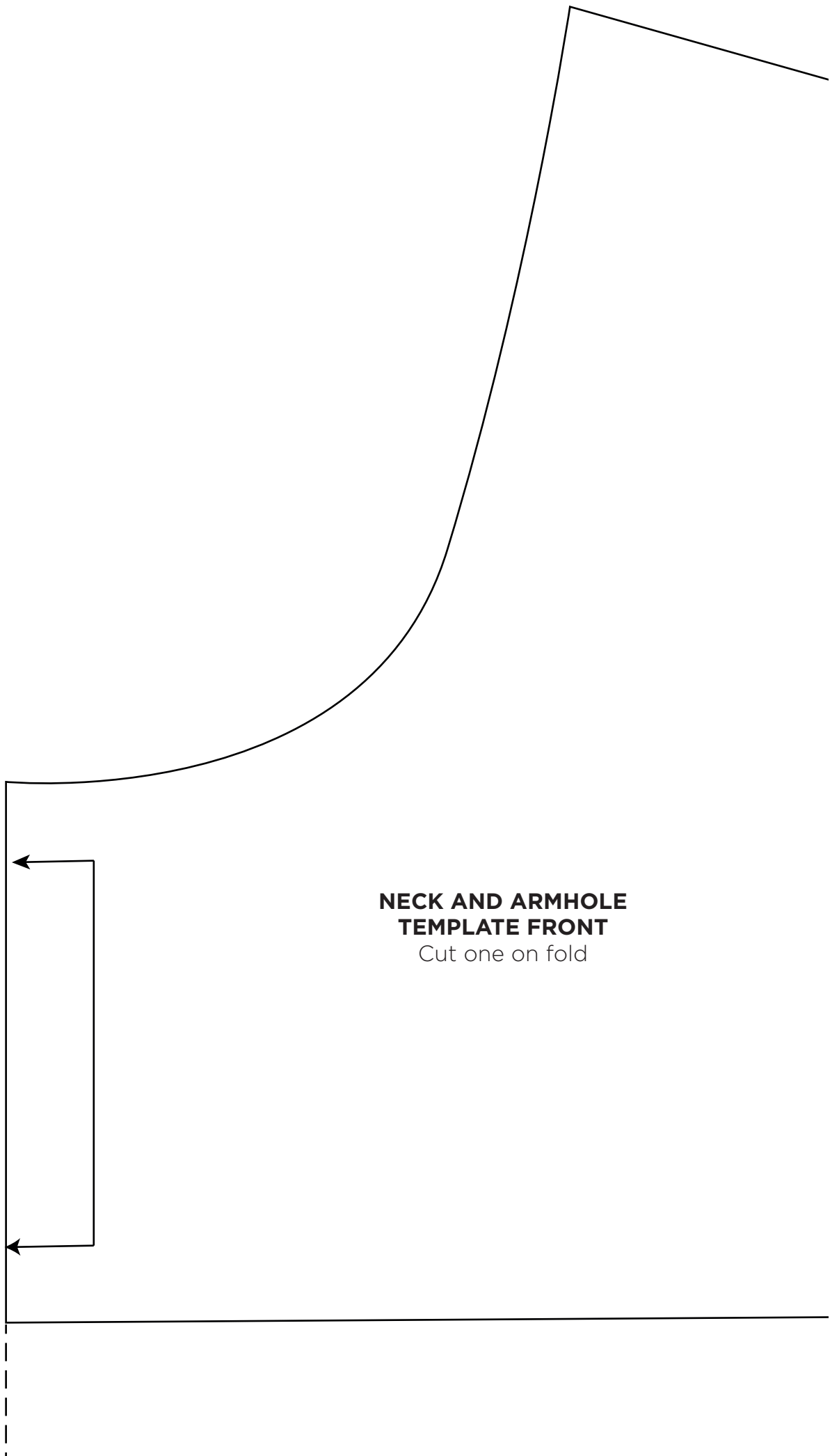
25cm
Stitch as far as notch





**NECK AND ARMHOLE
TEMPLATE BACK**
Cut one on fold





**NECK AND ARMHOLE
TEMPLATE FRONT**

Cut one on fold

